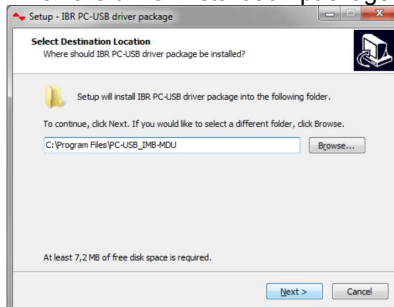


Installation of PC USB Cable Driver package

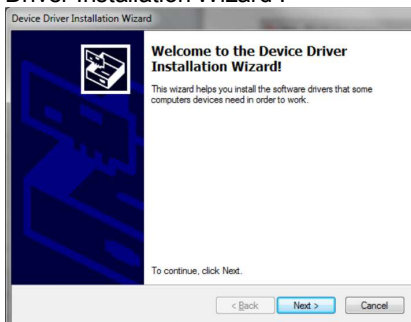
The driver installation package installs the USB Driver with COM-Port. This driver is required to operate the following devices :

- Cable DT1000

1. When the driver installation package is started, the installer asks for a directory where the driver files should be copied to :



2. By clicking on Next, the installer copies the required files to the directory selected and automatically opens the Device Driver Installation Wizard :



3. When the driver installation is completed, the Device Driver Installation Wizard shows you the result of the driver installation:

